



Votre distributeur agréé :

**IRTECH**

58 rue de l'Espérance

68120 PFASTATT

+33 (0)3 89 52 45 16

[www.irtech-environnement.fr](http://www.irtech-environnement.fr)

[irtech@orange.fr](mailto:irtech@orange.fr)

FLIR B Series

# FLIR B620

Ideal for building inspections

FLIR B620 is a high performance infrared inspection system specially developed for building applications including automatic humidity and insulation defects alarm. With its state of the art technology including a 640x480 detector it produces sharp detailed images. Its unique ergonomic design makes it convenient to work with during inspections. The camera is equipped with the standard 24° lens.



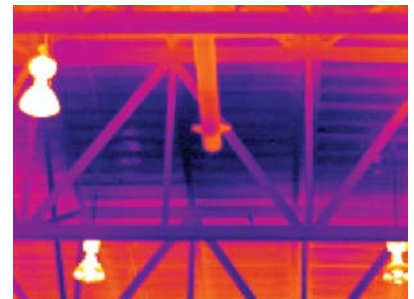
- Image resolution 640 x 480
- Sensitivity 40 mK
- Automatic Humidity alarm
- Automatic Insulation defects alarm
- Large high resolution 5.6" flip-out LCD
- Tilttable high resolution viewfinder
- High performance lenses with USM technology
- 1-2 times continuous zoom with pan
- Picture in Picture
- Thermal fusion: above, below interval
- Rotatable handle for convenient operation
- Built-in 3.2 Mpixel digital camera with target illuminator
- Standard temperature range -40 °C to 120 °C
- Periodic storage
- Panorama
- Voice and text annotation
- MPEG-4 streaming to PC using USB
- Programmable buttons
- User profiles

## Residential and Commercial Construction

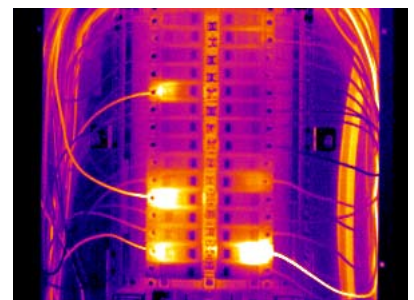
Building insulation needs are similar in residential and commercial construction. The roof, floor, and walls, are the common places for insulating against heat loss or for heat containment. With correctly installed insulation, businesses with large facilities or multiple facilities can make significant savings on energy bills.

## Locating the source of the inefficiency in energy use is the first step in cutting energy costs

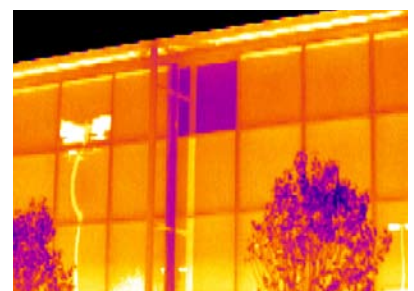
Energy audits of buildings are becoming increasingly popular as more companies look to establish their green credentials and save money at the same time. Infrared Thermography for building inspections shows what the eye cannot see.



Roofing



Electrical



Building insulation

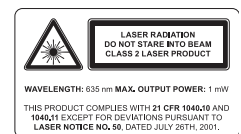
# FLIR B620 Technical Specifications

<b>Imaging and optical data</b>	
Field of view (FOV) / Minimum focus distance	24° × 18° / 0.3 m
Spatial resolution (IFOV)	0.65 mrad
Thermal sensitivity / NETD	40 mK @ +30°C
Image frequency	30 Hz
Focus	Automatic or manual (electric or on the lens)
Zoom	1–2 × continuous, digital zoom, including panning
Focal Plane Array (FPA) / Spectral range	Uncooled microbolometer / 7.5–13 μm
IR resolution	640 × 480 pixels
<b>Image presentation</b>	
Display	Built-in widescreen, 5.6 in. LCD, 1024 × 600 pixels
Viewfinder	Built-in, tiltable LCD, 800 × 600 pixels
Automatic image adjustment	Continuous / manual; linear or histogram based
Manual image adjustment	Level / span / max / min
Image modes	IR-image, visual image, thermal fusion, picture in picture, thumbnail gallery
Thermal fusion	IR image shown above, below or within temp interval on visual image
Picture in Picture	Resizable and movable IR area on visual image
Reference image	Shown together with live IR image
<b>Measurement</b>	
Temperature range	–40°C to +120°C
Accuracy	±2°C or ±2% of reading
<b>Measurement analysis</b>	
Spotmeter	3
Area	3 boxes or circles with max. / min. / average
Automatic hot / cold detection	Max / Min temp. value and position shown within box, circle or on a line
Isotherm	2 with above / below / interval
Difference temperature	Delta temperature between measurement functions or reference temperature
Reference temperature	Manually set or captured from any measurement function
Emissivity correction	Variable from 0.01 to 1.0 or selected from editable materials list
Measurement corrections	Reflected temperature, optics transmission, atmospheric transmission and external optics
Humidity alarm	1 humidity alarm, including dew point alarm
Insulation alarm	1 insulation alarm
<b>Set-up</b>	
Set-up commands	Configurable measurement tools menu; configure information to be shown in image; 2 Programmable buttons; user profiles; local adaptation of units, language, date and time formats
<b>Storage of images</b>	
Image storage	Standard JPEG, including measurement data, on memory card
Image storage mode	IR / visual images; simultaneous storage of IR and visual images Visual image is automatically associated with corresponding IR image
Periodic image storage	Every 10 seconds up to 24 hours
Panorama	For creating panorama images in FLIR Reporter Building software
<b>Image annotations</b>	
Voice	60 seconds stored with the image
Text	Predefined text or free text from PDA (via IrDA) stored with the image
Image marker	4 on IR or visual image
<b>Video recording and streaming</b>	
Non-radiometric IR-video streaming	MPEG-4 to PC using USB or WLAN (optional)
<b>Digital camera</b>	
Built-in digital camera	3.2 Mpixel, auto focus, and video lamp
<b>Laser pointer</b>	
Laser	Activated by dedicated button
<b>Data communication interfaces</b>	
Interfaces	USB-mini, USB-A, IrDA, composite video, headset connection
<b>Power system</b>	
Battery	Li Ion, 3 hours operating time
Charging system	In camera (AC adapter or 12 V from a vehicle) or 2-bay charger
Power management	Automatic shutdown and sleep mode (user selectable)
<b>Environmental data</b>	
Operating temperature range	–15°C to +50°C
Storage temperature range	–40°C to +70°C
Humidity (operating and storage)	IEC 68-2-30/24 h 95% relative humidity +25°C to +40°C
Encapsulation	IP 54 (IEC 60529)
Bump	25 g (IEC 60068-2-29)
Vibration	2 g (IEC 60068-2-6)
<b>Physical data</b>	
Camera weight, incl. lens and battery	1.8 kg
Cameras size, incl. lens (L × W × H)	324 × 144 × 147 mm
Tripod mounting	UNC ¼"-20

<b>Camera includes:</b>
Hard transport case
Infrared camera with lens
Battery (2 ea., one inserted in camera, one outside camera )
Battery charger
Calibration certificate
FLIR QuickReport™ PC software with CD-ROM
Headset
Lens cap (mounted on lens)
Lens cap (2 ea.)
Mains cable
Memory card-to-USB adapter
Memory card with adapter
Power supply
Printed Getting Started Guide
Shoulder strap
USB cable
User documentation CD-ROM
Video cable
Warranty extension card or Registration card
<b>Supplies &amp; Accessories</b>
Close-up IR lens 0.5X, f = 75 mm (fits 24° IR lens) for ThermoCAM and FLIR 600 series
IR lens f = 76 mm, 12°, incl. case for FLIR 600 series
IR lens, f = 131 mm, 7°, incl. case for FLIR 600 series
IR lens f = 19 mm, 45°, incl. case for FLIR 600 series
IR lens f = 38 mm, 24°, incl. case for FLIR 600 series
Macro lens 1x (25 μm) with case
Protective window (fits 24°) with case
High temperature option +2000°C
High temperature option +1500°C
Battery
Battery charger, incl. power supply and cable
Battery charger, incl. power supply and cable
Battery charger, incl. power supply and cable
Battery charger, incl. power supply with multi plugs
Power supply, incl. multi plugs
SD memory card, 1 GB
Adapter, SD memory card to USB
Memory card micro-SD with adapters
USB cable Std A <-> Mini-B, 2 m
Video cable, RCA <-> RCA, 2.0 m
Cigarette lighter adapter kit, 12 VDC, 1.2 m
Hard transport case for FLIR B/P/SC640
Headset, 3.5 mm plug
Remote Control Unit
FLIR Reporter Ver. 8.3 Professional (Sec. device)
FLIR Reporter Ver. 8.3 Professional
FLIR Reporter Ver. 8.3 Standard (Sec. device)
FLIR Reporter Ver. 8.3 Standard
FLIR BuildIR
FLIR Reporter Ver. 8.5 Standard
FLIR Reporter Ver. 8.5 Professional
Cover Visual Camera mkII



Optional Wireless Local Area Network remote control and display.



Asia Pacific Headquarter  
 Hong Kong  
 FLIR Systems Co Ltd.  
 Room 1613 – 16, Tower 2 Grand Central Plaza  
 138 Shatin Rural Committee Road, N.T, Hong Kong  
 Tel: +852 2792 8955 Fax: +852 2792 8952  
 Email: flir@flir.com.hk Web: www.flir.com/thg

